



3790 N.W. 21st Street
Miami, Florida 33142

SR 924/GRATIGNY PARKWAY WEST EXTENSION TO THE HOMESTEAD EXTENSION OF THE FLORIDA TURNPIKE (HEFT) PROJECT DEVELOPMENT & ENVIRONMENT STUDY (PD&E)

Project Overview

MDX has initiated a PD&E Study of the SR 924/Gratigny Parkway West Extension to the HEFT. This study will evaluate alternatives for construction improvements to SR 924 to relieve congestion and improve safety within the study area, and to improve system linkages in South Florida. The project will be developed in cooperation with other transportation and land use plans in the study area, including the NW 138th Street Roadway Widening Project from I-75 to NW 107th Avenue underway in Hialeah, and the Florida Department of Transportation I-75 PD&E Study which will analyze improvements on I-75 from south of SR 826/Palmetto Expressway in Miami-Dade County to I-595 in Broward County.

Scope of Work

During the PD&E, different alternatives for the SR 924/Gratigny Parkway West Extension to the HEFT will be analyzed and evaluated. The study will look at engineering alignments and evaluate environmental impacts, including noise, air, and visual impacts, amongst others, which involves close coordination with government agencies. MDX will provide a continuous public involvement effort to ensure the public's input in the development and selection of the project alternatives.

Project Benefits

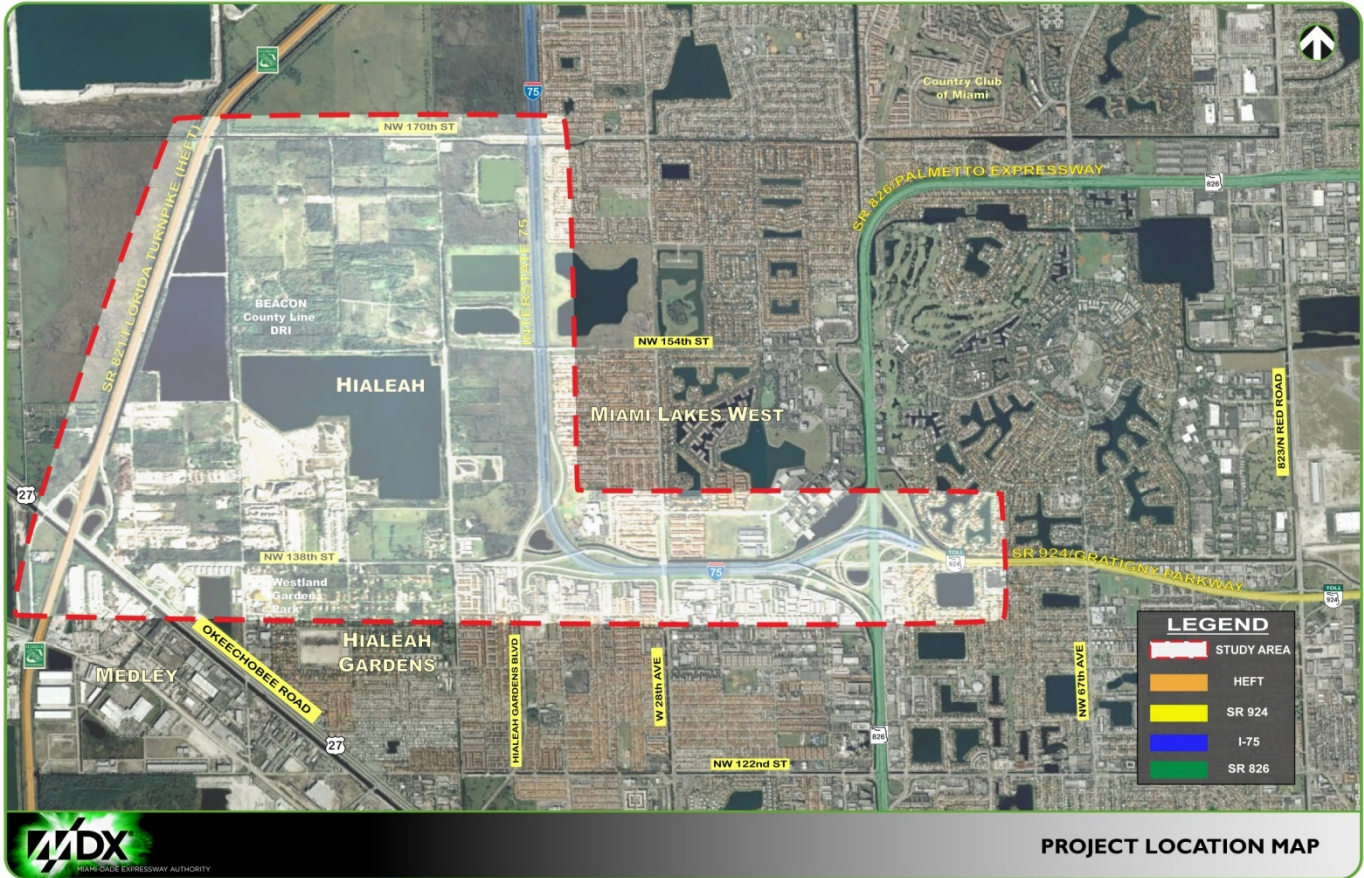
- Additional connectivity to the expressway roadway systems from NW 138th Street (HEFT, I-75 and SR 924), thereby improving mobility throughout the area
- Greater access to major activity centers and employment centers in Northwest Miami-Dade
- Significant reduction of environmental impacts from traffic congestion (e.g., mobile source air pollutant emissions, neighborhood and community disruption)
- Greater opportunities for connections to transit and planned non-motorized facilities in the area would be created within the study area
- Congestion relief throughout the surrounding roadway network including NW 138th Street, Okeechobee Road and I-75

For More Information: Contact: Tere Garcia, Public Information Officer
Phone: (786)-277-9292
E-mail: 924west@mdxway.com

The Miami-Dade Expressway Authority (MDX) operates and maintains five expressways: SR 112/Airport Expressway, SR 836/Dolphin Expressway, SR 874/Don Shula Expressway, SR 878/Snapper Creek Expressway, and SR 924/Gratigny Parkway. MDX is funded almost entirely by toll revenue and is dedicated to moving Miami-Dade County forward by making your commute safer and more efficient.

SR 924/GRATIGNY PARKWAY WEST EXTENSION TO THE HOMESTEAD EXTENSION OF THE FLORIDA TURNPIKE (HEFT) PROJECT DEVELOPMENT & ENVIRONMENT STUDY (PD&E)

Project Location Map



Project Schedule

