

**MPO 2030 Long Range
Transportation Plan Amendment
Request
SR 924 East Extension
to I-95**

October 2008

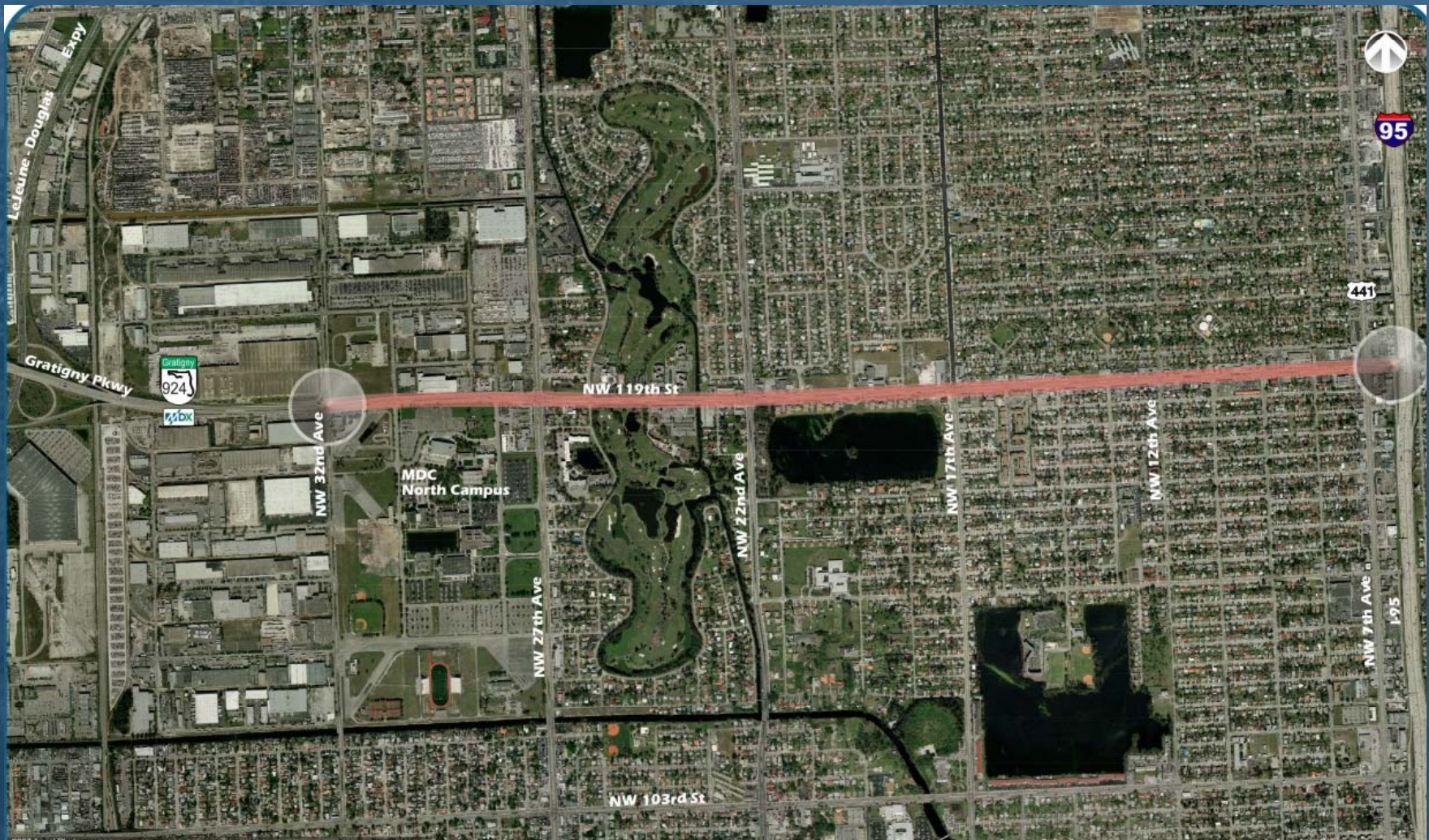


Purpose for the amendment

- MDX requirements to evaluate or consider any project:
 - Must be in the MPO's Long Range Plan (LRTP)
 - Must be included in the Miami-Dade County Comprehensive Development Master Plan (CDMP)
- MDX thru its Vision Process (Long Range Plan update) has identified needs:
 - SR 924 (Gratigny) Extension East to I-95
 - SR 924 (Gratigny) Extension West to HEFT is in LRTP – Concept Report in process

Project Proposed Location

- SR 924/NW 119 Street from 32nd Avenue to I-95



Project Goals

- Direct expressway connection from SR 924 (Gratigny Expressway) to I-95
- Improved access and mobility to major origins and destinations
- Reduced travel time and delays along local area roadway network
- Opportunities for enhancements to local area roadway network and environs

Provide East-West Corridor in North Miami-Dade

Project Information

- 2 miles in length
- Operates at Level of Service F at peak times
- Commercial/industrial uses west of NW 27th Ave.
- Residential from 27th Avenue east to I-95
- NW 119th Street frontage is mostly commercial with some residential uses
- Major landmarks
 - MDC North Campus, Westview Country Club, Barry University
- Preliminary traffic estimates: 90,000 vehicles per day

Project Status

- Inclusion of project into LRTP by October 2008
- Inclusion in the CDMP
- Concept Report Development by July 2009
- Coordination of Project Development and Environment Study (PD&E) with SR 924 West Extension
- From concept development to construction: 10 years
- Preliminary construction cost \$290 million
- Depending on MDX Financial Plan

Project Issues

- Multiple jurisdictions: Miami-Dade County, cities of Opa-Locka, Hialeah, North Miami, Miami Lakes
- Agency coordination: Miami-Dade Transit, Florida Department of Transportation
- Potential Right-of-way impacts to adjacent areas
- Visual and Aesthetic Impacts
- Livable Communities opportunity

Public Outreach

- Governmental briefings to district elected officials
- To be conducted during concept development and Project Development and Environmental Study (PD&E)
- Will assure community involvement in enhancement opportunities to the local area
- Public's input critical and will determine option selected

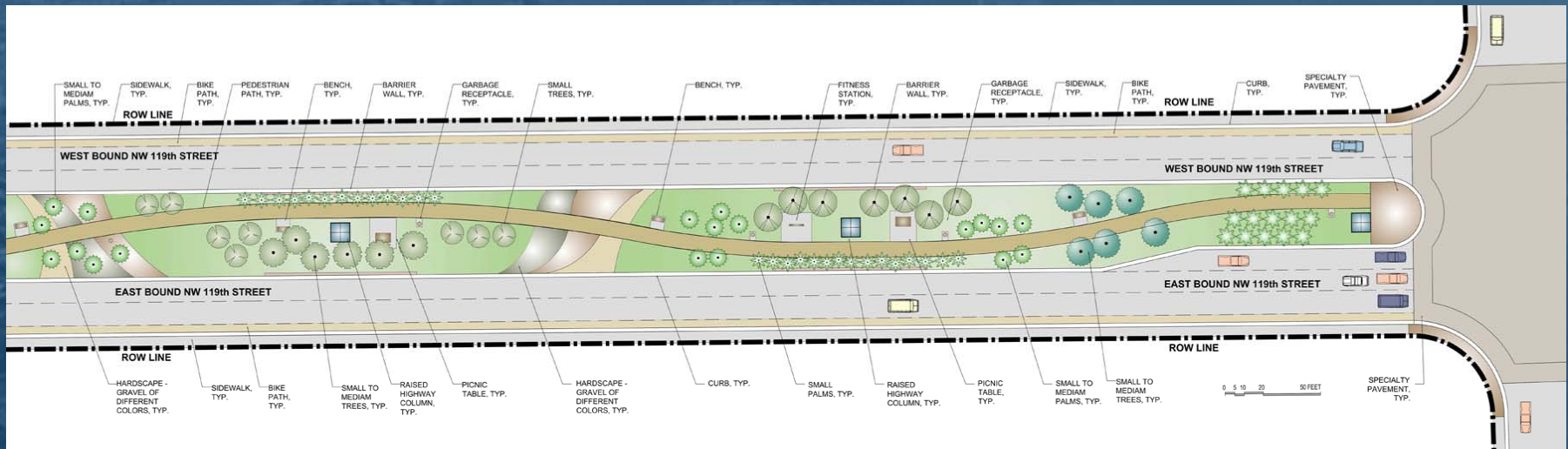
Preliminary Ideas

- Option 1
 - Elevated highway with single columns in the median
 - Through traffic would use elevated highway and ease local traffic
 - Median could be widened to provide for livable communities enhancements tying to Miami-Dade Open Space Plan
- Option 2
 - At grade with grade separation at major intersections

Preliminary Ideas- 118' Typical Section

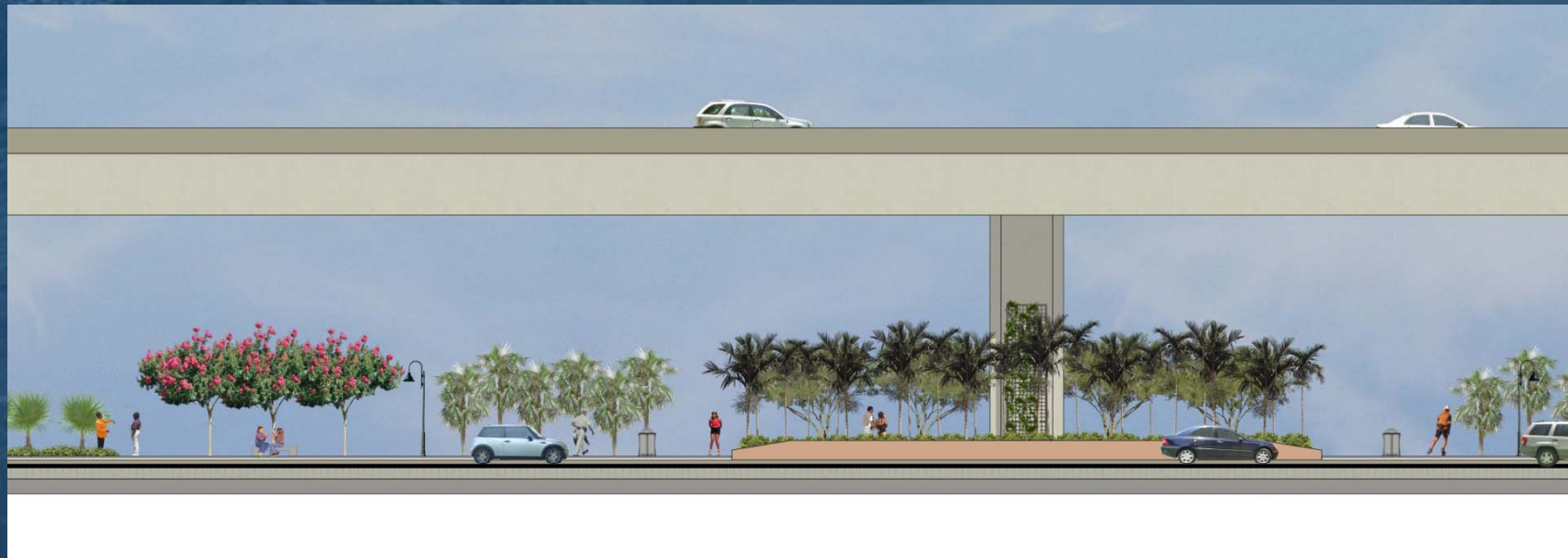


Plan View



Potential linear park on median

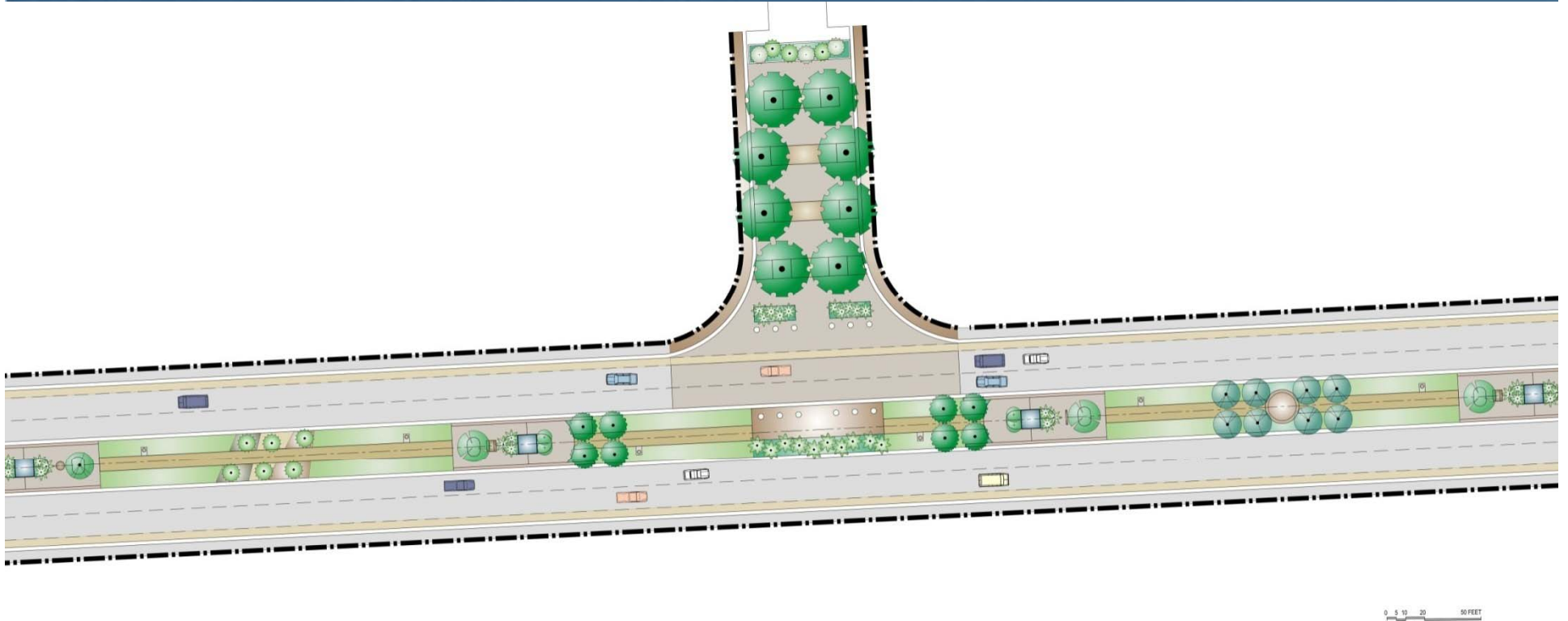
Preliminary Ideas – Elevation Open View



Preliminary Ideas- Elevation

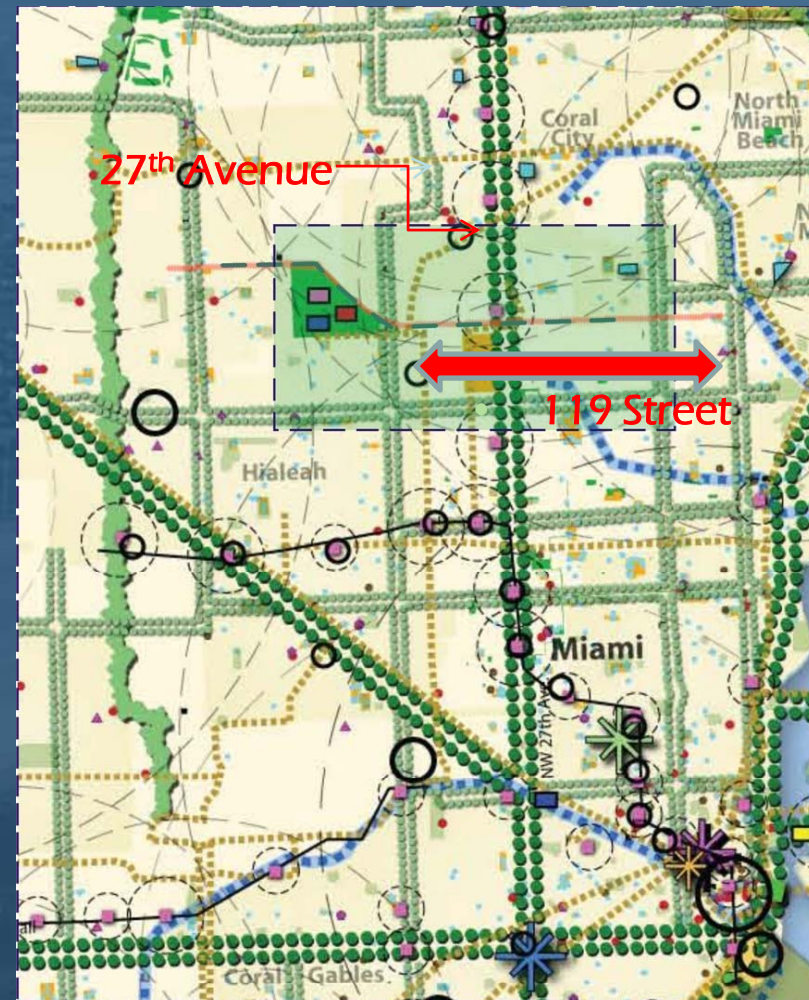
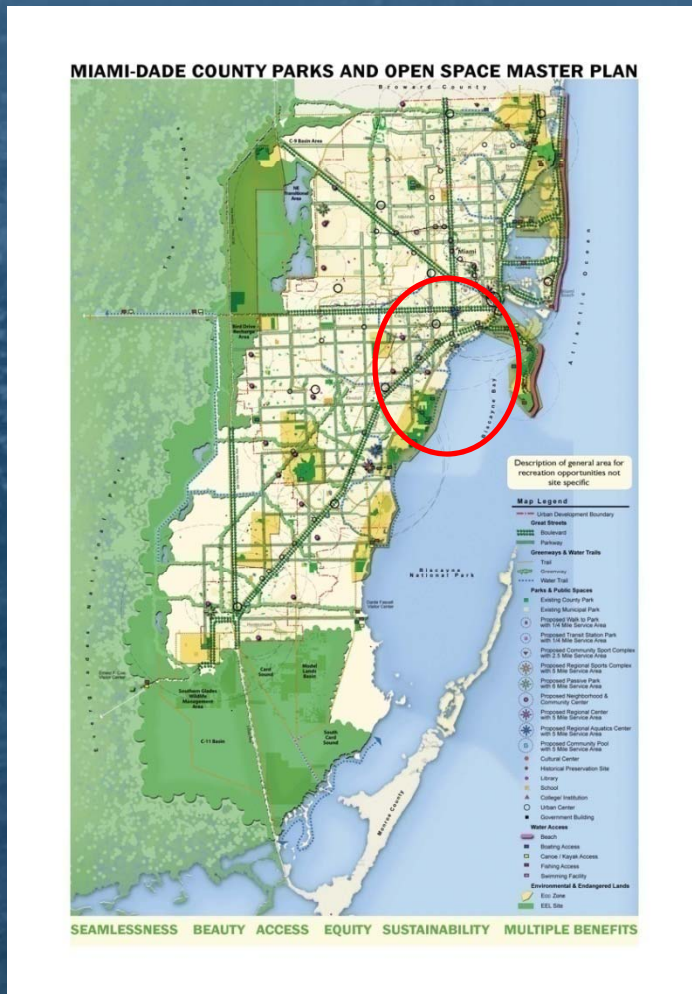


Plan View



Potential connection to existing closed streets and parks – North Miami

Preliminary Research



Parks and Open Space Master Plan – connectivity potential

MDX Proven Record amenities included in projects



SR 836 Extension bike path



NW 9th Street linear park



Conclusion

- Must be in 2030 LRTP for MDX to evaluate
- Need identified initially by CTAC & confirmed at MPO's Long Range Plan 2008 citizens workshops
- Public input will be determining factor
- Will not compete for funds with any other MPO project – funded by tolls
- Improve mobility & provide an east west corridor in North Miami-Dade County

**For more information on MDX please
visit our website**

www.mdxway.com

