



3790 N.W. 21st Street
Miami, Florida 33142

SR 874/DON SHULA EXPRESSWAY RAMP CONNECTOR PROJECT DEVELOPMENT & ENVIRONMENT STUDY

Project Overview

MDX has initiated a Project Development and Environment Study (PD&E) in an effort to provide a new access ramp connection from the terminus of SR 874/Don Shula Expressway to SW 136th Street. This new ramp would provide expressway access to the growing southwest Miami-Dade communities located west of Florida's Turnpike, between SW 120th Street and SW 152nd Street. This area is presently only serviced by access to and from Florida's Turnpike, through the SW 120th Street and the SW 152nd Street ramps, which are congested in the mornings and evenings when residents are traveling to and from work. The increase in congestion is mainly due to the rapid growth of the residential, commercial and industrial uses in the area.

Scope of Work & Public Involvement

- During the PD&E, different alternatives for the Ramp Connector will be analyzed and evaluated. The study will look at engineering alignments, evaluation of environmental impacts including noise, air, and visual impacts amongst others and close coordination with other government agencies.
- MDX will provide a continuous public involvement effort to ensure the public's input in the development and selection of the project alternatives. In addition to a kick-off meeting that will provide information on the project, MDX will also schedule an Alternatives Public Information Meeting and a Public Hearing at the end of the study. MDX will actively encourage and facilitate the involvement of the general public, special interest groups, and elected officials.

Project Schedule

The PD&E Study is anticipated to be completed by the summer of 2011.

Project Benefits

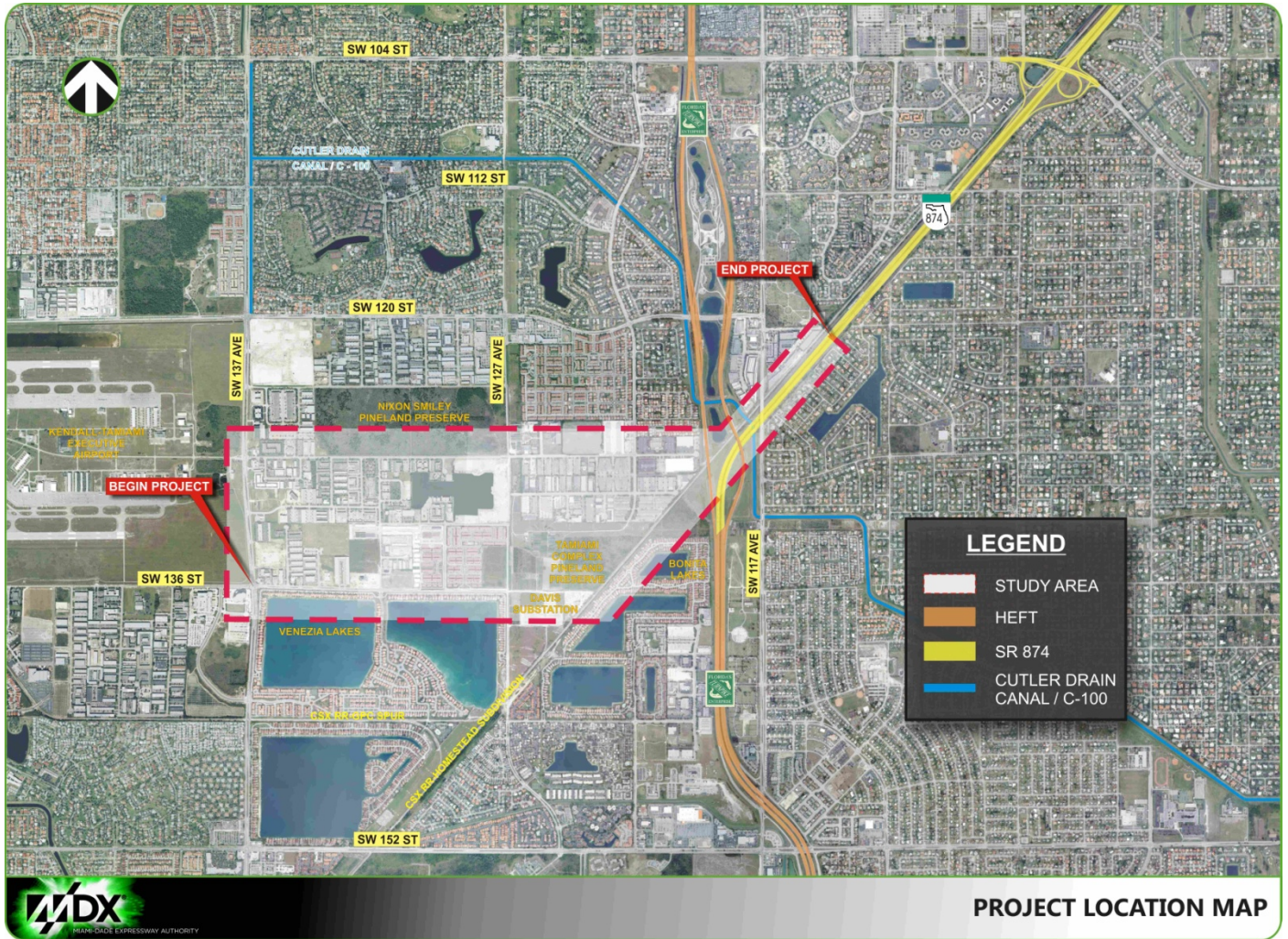
The SR 874/Don Shula Ramp Expressway Ramp Connector will provide an alternative to expressway access in the area, providing additional connectivity and mobility to the rapid growing area of southwest Miami-Dade County. The project will provide greater accessibility to major employment and activity centers located east of this area.

For More Information: Contact: Tere Garcia, Public Information Officer
Phone: 786 277-9292
E-mail: 874ramp@mdxway.com

The Miami-Dade Expressway Authority (MDX) operates and maintains five expressways: SR 112/Airport Expressway, SR 836/Dolphin Expressway, SR 874/Don Shula Expressway, SR 878/Snapper Creek Expressway, and SR 924/Gratigny Parkway. MDX is funded almost entirely by toll revenue and is dedicated to moving Miami-Dade County forward by making your commute safer and more efficient.

SR 874/DON SHULA EXPRESSWAY RAMP CONNECTOR PROJECT DEVELOPMENT & ENVIRONMENT STUDY

Project Location Map



Project Schedule

